

COQUITLAM MINOR

HOCKEY
HOUSE PARENT

MEETING





● AGENDA

- **Intro to Board Members**
- **PCAHA Communications Structure**
- **Team Financials**
- **Risk Topics**
- **Volunteering**
- **Tryout/Evaluation Procedure and Process**
- **Regular Season Structure and Calendar**



ROLL CALL & INTROS



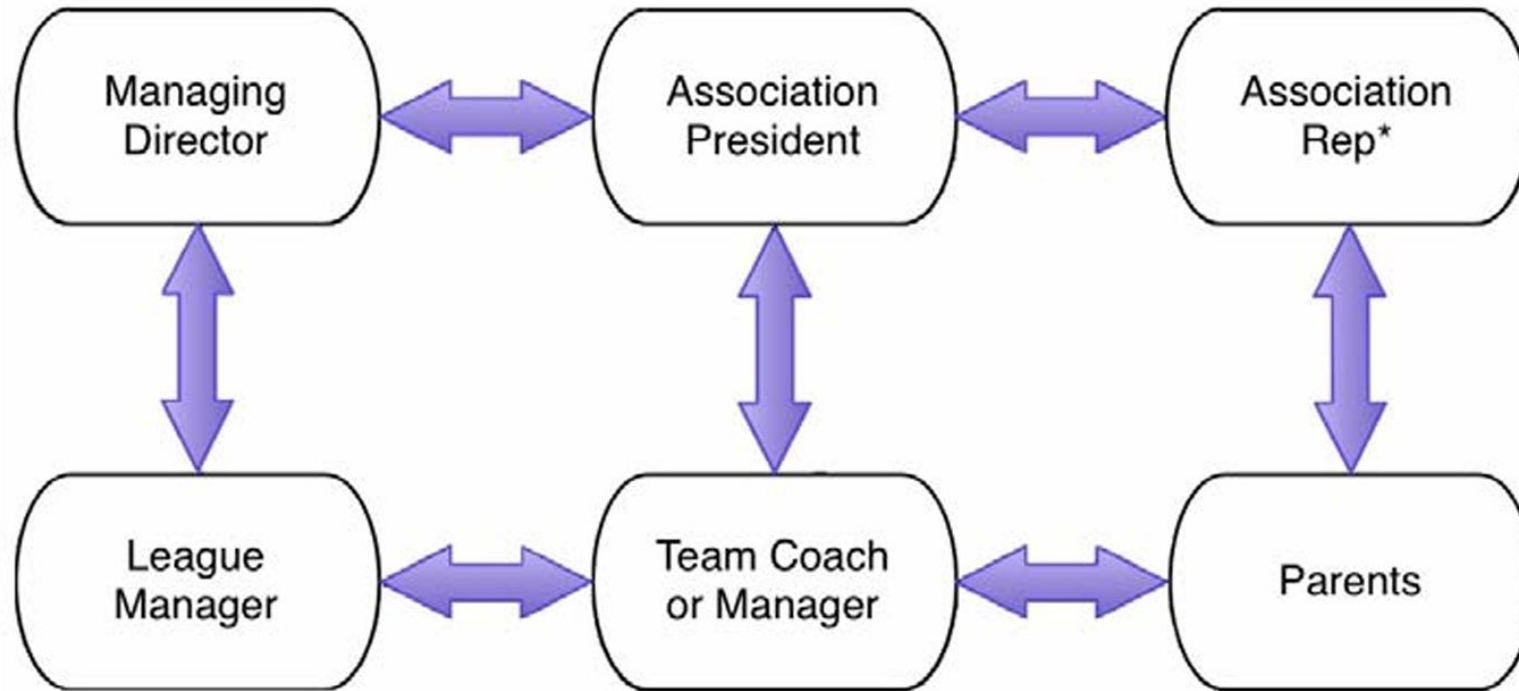


COMMUNICATIONS



● COMMUNICATIONS

PCAHA Communication Model



*-according to MHA's communication procedure.



TEAM FINANCIALS



TEAM BUDGETS

The following slides provide an approximation of team fees that should be expected and the line items that CMHA has deemed to be acceptable uses of those funds. Team budgets may not be submitted for approval to VP/DC until the teams are FINAL. Budget approval by VP of the division and budget ratification by the team are required before team fees can be collected.

These are general approximations. All budgets must fall within the provided guidelines on the CMHA Team Financial Workbook (found on the CMHA manager's page). All discretionary budget items outside of those listed, for example third jersey sets or tournaments to locations requiring air travel (this is not an exhaustive list), must be agreed upon by the entire team (100%) by separate email to the VP of the division, by each family.

Note: These outlines do not account for Playoffs & Championships so teams must budget for those. CMHA makes every attempt to provide support to those teams advancing but it is expected that the teams be able to cover their costs.

U11 C

Approximately \$350-\$400 per player

- Team Tournaments (usually between \$1300-\$1800)
-tournament gathering
- Ref costs \$102 per game (home team pays)
- Extra Ice (see ice chart on the managers resources page / ice)
- Team activities (gym rental, dryland etc.)
- Misc. – supplies, bank charges etc.
- Player trophies/medals
- Year end party
- Bench Staff gifts
- Apparel
- Mandated** Goalie Development \$500 per team (withdrawn from team account, mid-October.

U13 C

Approximately \$350-\$500 per player

- Team Tournaments (usually between \$1300-\$1800)
CMHA U13/15 C Winter Classic: \$1750 per team + raffle
Approx \$150
-tournament gathering
- Ref costs \$115 per game (home team pays)
- Extra Ice (see ice chart on the managers resources page / ice)
- Team activities (gym rental, etc.)
- Misc. – supplies, bank charges etc.
- Player trophies/medals
- Year end party
- Bench Staff gifts
- Apparel
- Mandated** Goalie Development \$500 per rostered goalie
(withdrawn from team account, mid-October)

U15 C

Approximately \$450-\$500 per player

- Team Tournaments 2 or 3 (usually between \$1500-\$2000)
- **CMHA Winter Classic: \$1750 per team + raffle approx \$150**
-tournament gatherings
- Ref costs \$130 per game (home team pays)
- Extra Ice (see ice chart on the managers resources page / ice)
- Team activities (gym rental, etc.)
- Misc. – supplies, bank charges etc.
- Player trophies/medals
- Year end party
- Bench Staff gifts
- Apparel
- Budgeted* Goalie Development \$500 per rostered goalie

U18 C

Approximately \$450-\$600 per player

- Team Tournaments 2 or 3(usually between \$1600-\$2100)
-tournament gatherings
- Ref costs \$144 per home game
- Extra Ice (see ice chart on the managers resources page / ice)
- Team activities (gym rental, etc.)
- Misc. – supplies, bank charges etc.
- Player trophies/medals
- Year end party
- Bench Staff gifts
- Apparel
- Budgeted* Goalie Development: \$500 per rostered goalie

NOTES

* “Budgeted” is defined as goalie development that is mandatory to cover out of team funds, but not mandated to be spent via CMHA in-house goalie development. These divisions have the option to opt-in to in-house development or choose their own developers, but they must spend the budgeted amount.

** “Mandated” means that the team cannot opt-out of the in-house goalie development.

Teams that do not include these costs in their budgets will not have their budgets approved.



RISK





● **RIS
K**

- **Required certifications**
- **2 Deep Rule**
- **Complaint Process**
- **Parent, Player, and Coach Code of Conduct**
- **Bullying and Harassment**
- **BC Hockey Rules and Regulations**



VOLUNTEERING





● VOLUNTEERING

- **Requirements for ALL CMHA Families**
- **Association, Team, Tournament Hours**
- **Where to find this information on the website**
- **Events and Engagement Committee Membership**
- **DEI Committee Update**



EVALUATION --- PROCESS



● **TRYOUTS AND EVALUATIONS**

- **Process and Policy is outline on our website:**
 - **coquitlamminorhockey.org/bylaws-policies/**
- **Independent Evaluators from Atomic Hockey**
- **Coaches will be part of the process**
- **Intersquad Balancing Games will be mandatory for all C divisions**
- **We will have:**
 - **4 U11 C teams**
 - **4 U13 C teams**
 - **5 U15 C teams**
 - **5 U18 C teams**



UPCOMING DATES





● UPCOMING DATES

- **September Long Weekend: nothing scheduled**
- **September 3: Skills and Evaluations start for C players**
- **September 30: Manager and Treasurer Meeting**



GIANTS FUNDRAISER





● GIANTS FUNDRAISER

- **Game - Friday, Jan. 17th, 7pm**
- **We need to sell 300 tickets min. as an Association**
- **Each team will be required to sell a certain # of tickets.**
- **Tickets will be sold at \$24 each and the profit (\$7.50) per ticket will go straight back to team**
- **The Association also receives half of the 50/50**
- **Full details will be communicated to teams soon**



NEW TEAM NAME





● **NEW TEAM NAME**

- **Coquitlam Comets - We look forward to hearing our team name chanted loudly at the rink, for all games and tournaments!**